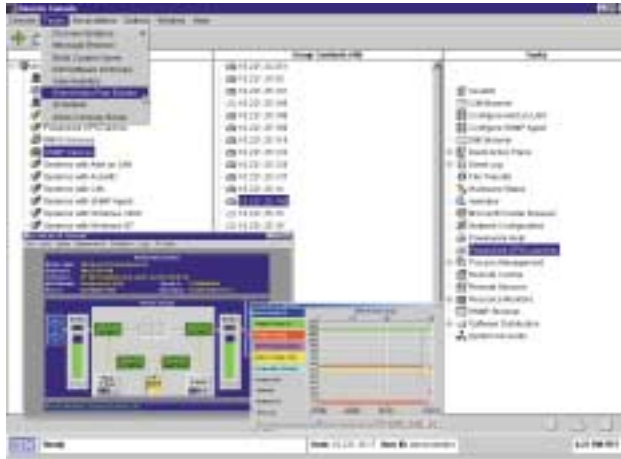


Powerware® Extensions for IBM Director Management System

Features

- ▶ Seamless integration of UPSs into the IBM Director Management Console
- ▶ UPS inventory management
- ▶ UPS event and alarm management
- ▶ UPS load segment control
- ▶ UPS reboot and scheduled shutdown
- ▶ Network wide UPS battery test
- ▶ Standard RFC1628.MIB and PowerMIB XUPS.MIB support
- ▶ SNMP "GET" and "SET" commands support
- ▶ SNMP Trap forwarding support
- ▶ Central log for UPS events
- ▶ IBM Director Upward Integration
- ▶ IBM Server Proven Certified solution

**For a detailed description of features, refer to the back of this sheet.



Snapshot

Type: Network Management System integrated (Snap-In) UPS monitoring and management

Price: Free-of-charge

Distribution: Power Web site www.powerware.com download

Media: Executable





As a part of Powerware's comprehensive family of power management applications, the Extensions for IBM Director considerably simplify network management tasks for UPSs. This is achieved by allowing system administrators to monitor, diagnose, configure, set alarms, schedule self-tests, check battery, gather inventory information, and control Powerware UPSs network wide from a single console within IBM Director.

Monitoring and controlling all Powerware UPSs in the network has never been easier. Obtain real-time advance notification on critical elements of server power management, such as UPS battery status, load level and alarms for battery replacement.

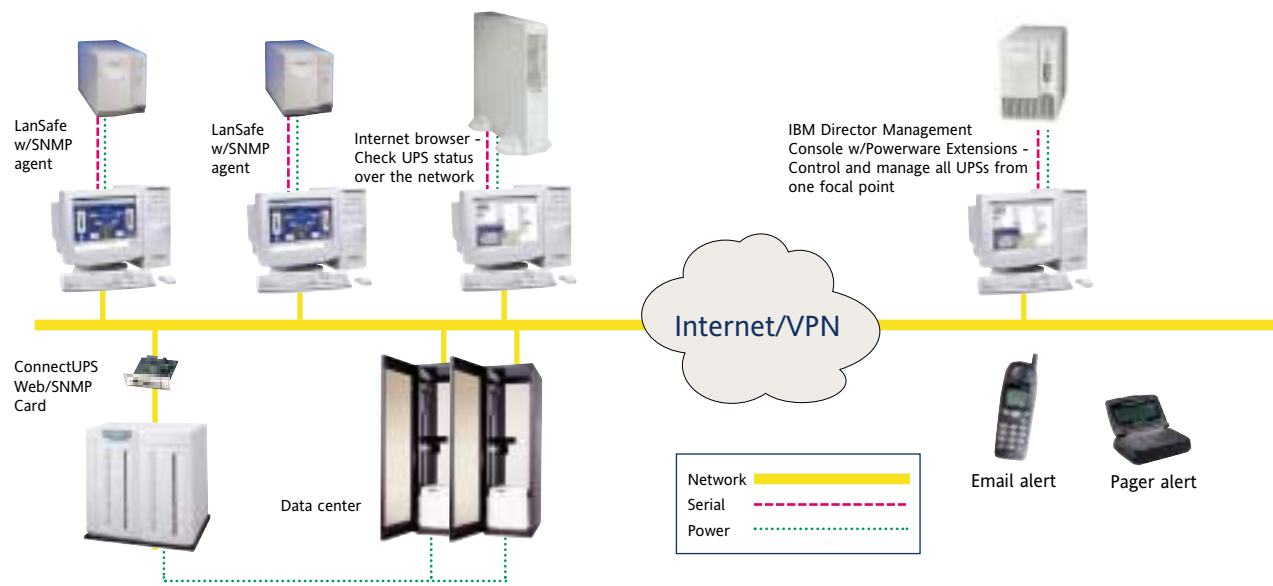
Integrating Powerware UPSs into Director's network topology brings UPS control and power management to the fingertips of Director system administrators. Powerware Extensions help IBM Director users maximize power systems availability through an interface they are already familiar with.

In addition to Director's own set of tools, users can simply double-click the UPSs in Director's Management Console, and launch Powerware's LanSafe™ or ConnectUPS™ Web/SNMP Card applications. All the powerful features and functions of these Powerware award-winning programs are now just a click away with this integrated snap-in solution.

Powerware Recommends

Software	UPS	Connectivity	System Solutions
> LanSafe v. 4.17.3a and higher 	Supports UPS models from 250 VA-4000 > 9125 kVA > 9120 > 9340 > 5125 > 9330 > 5115 > 9315 > 3115 > 9150 > 3110 	> ConnectUPS Web/SNMP Card  > USB Card > Multi-Server Card	Upward integration via IBM Director to Tivoli®, HP OpenView, Microsoft® SMS, CA Unicenter, BMC, NetIQ® and Intel LANDesk® management systems 

IBM Server Proven™



After installing Powerware Extensions on IBM Director, the system administrator will be able to control and manage all the UPSs on the network from one focal point: monitor battery health, gather inventory data, send alarms to pagers and cell phones, power on/off UPSs and load segments among other tasks. LanSafe and Web/SNMP Card applications can be conveniently launched right from the Management Console.

Features In-depth

Seamless integration of UPSs into the IBM Director Management Console

- ▶ Allows administrators to monitor UPSs in the network, in real-time and obtain advance notice on critical elements of server power management, such as UPS battery status, load level, temperature and alarms for battery replacement
- ▶ Launch LanSafe and SNMP/Web Card UPS applications from within Director
- ▶ Ability to maximize systems availability through the IBM Director user interface

UPS inventory management

- ▶ Perform UPS inventory queries network wide
- ▶ Create customized reports on UPS locations, models, serial numbers, firmware versions, equipment attached to UPSs and other details

UPS event and alarm management

- ▶ Start programs, send email, send messages to pagers, log to file, send to newsgroup, initiate SNMP traps triggered by UPS event changes

UPS Load Segment Control

- ▶ Control UPS load segments – individual receptacle groups
- ▶ Increase run time by up to 50% on mission-critical loads. Switch different UPS loads on and off at predefined times or power failure situations

UPS reboot and scheduled shutdown

- ▶ UPSs can be commanded to reboot specific computer systems or internetworking devices either locally or remotely over the network
- ▶ Initiate scheduled shutdown/reboot tasks with integrated UPS applications

Network wide UPS battery test

- ▶ Test battery health for all UPSs throughout the network

Standard RFC1628.MIB and PowerMIB XUPS.MIB support

- ▶ Compatible with the industry standard RFC1628 UPS MIB
- ▶ Additional Powerware proprietary XUPS.MIB is provided

for extra functionality such as load segment control

SNMP "GET" and "SET" commands support

- ▶ Control and manage the UPSs on the network via SNMP with the SNMP "GET" and "SET" commands

SNMP Trap forwarding support

- ▶ Forward SNMP Traps from IBM Director to other network management systems

Central log for UPS events

- ▶ Log all or only predefined UPS events network wide in a central IBM Director log

IBM Director Upward Integration

- ▶ Enables Director tools and agents to integrate with Tivoli®, HP OpenView, Microsoft® SMS, CA Unicenter, BMC, NetIQ® and Intel LANDesk® management systems

IBM Server Proven Certified solution

- ▶ Fulfills IBM Certification criteria
- ▶ Ensures compatibility with IBM Director solutions

System Requirements/Technical Summary

Requirements for LanSafe Systems

- ▶ For LanSafe III, v. 4.17.3a or higher is recommended
- ▶ Configure system to forward SNMP traps to the Director Server

Requirements for ConnectUPS Web/SNMP Card Systems

- ▶ For the 10Mb ConnectUPS SNMP/Web Card
- ▶ For the 100Mb ConnectUPS Web/SNMP Card
- ▶ A web browser must be installed on the computer that will monitor and control the UPS

- ▶ For shutting down the computer, install NetWatch Clients 4.01 or higher software available from www.powerware.com

Supported Operating Systems

- Director Server
- ▶ Microsoft Windows NT 4.0 Server
 - ▶ Microsoft Windows NT 4.0 Enterprise
 - ▶ Microsoft Windows 2000 Server
 - ▶ Microsoft Windows 2000 Advanced Server

Director Console

- ▶ Microsoft Windows NT 4.0 Server
- ▶ Microsoft Windows NT 4.0 Enterprise
- ▶ Microsoft Windows NT 4.0 Workstation
- ▶ Microsoft Windows 98
- ▶ Microsoft Windows 98 SE
- ▶ Microsoft Windows 2000 Server
- ▶ Microsoft Windows 2000 Professional
- ▶ Microsoft Windows 2000 Advanced Server
- ▶ Microsoft Windows XP Professional

Windows, Windows NT, Win32, and Outlook are trademarks or registered trademarks of Microsoft Corporation in the United States, other countries, or both. IBM is a registered trademark of International Business Machines Corporation in the United States, other countries, or both.

Invensys Powerware
8609 Six Forks Road
Raleigh, NC 27615 U.S.A.
Toll Free: 1.800.356.5794
or 919.872.3020
Fax: 1.800.753.9433
www.powerware.com

Europe/Middle East/Africa
Finland: +358.9.452.661

Southeast Asia
Singapore: 65-8610377

China and North Asia
Hong Kong: 852.2745.6682

Japan
Shinagawa Tokyo: 813.3447.5251

Australia and South Pacific
Sydney, Australia: 612..9878.5000

Canada
Toronto, Ontario: 416.798.0112

Brazil
Sao Paulo, Brazil:
55.11.3933.8555/855.8500

Mexico
Col. Napoles C.P.,

Mexico 525.527.61.69/
525.488.33.33

Invensys™
POWERWARE®